



National Trends: Where does MN stand?

Stephanie Jones Peguero,
MSW MPA
Casey Family Programs
Data Advocacy

**SAFE
STRONG
SUPPORTIVE**

casey family programs

SAFE CHILDREN STRONG FAMILIES SUPPORTIVE COMMUNITIES SAFE CHILDREN STRONG FAMILIES SUPPORTIVE
COMMUNITIES SAFE CHILDREN STRONG FAMILIES SUPPORTIVE COMMUNITIES SAFE CHILDREN STRONG FAMILIES
SUPPORTIVE COMMUNITIES SAFE CHILDREN STRONG FAMILIES SUPPORTIVE COMMUNITIES SAFE CHILDREN STRONG
FAMILIES SUPPORTIVE COMMUNITIES SAFE CHILDREN STRONG
FAMILIES SUPPORTIVE COMMUNITIES SAFE CHILDREN
STRONG FAMILIES SUPPORTIVE COMMUNITIES SAFE
CHILDREN STRONG FAMILIES SUPPORTIVE COMMUNITIES

safe children | strong families | supportive communities

SAFE STRONG SUPPORTIVE

CASEY FAMILY PROGRAMS

VISION: A nation where supportive communities nurture the safety, success and hope of every child

MISSION: Our mission is to provide and improve – and ultimately prevent the need for – foster care

SAFE STRONG SUPPORTIVE

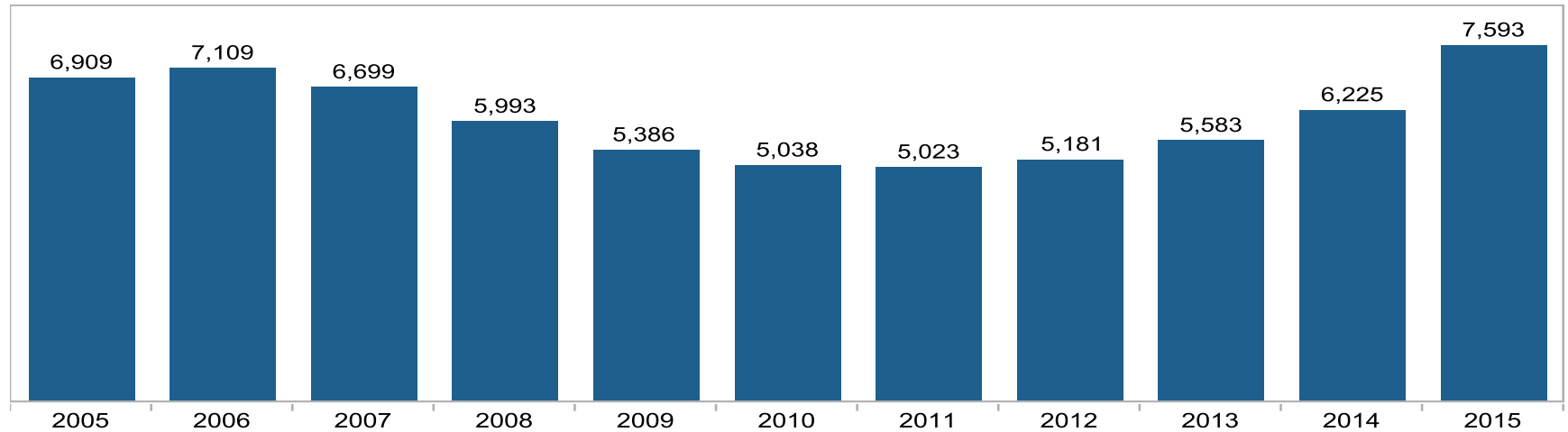
Trends

NATIONAL AND MINNESOTA

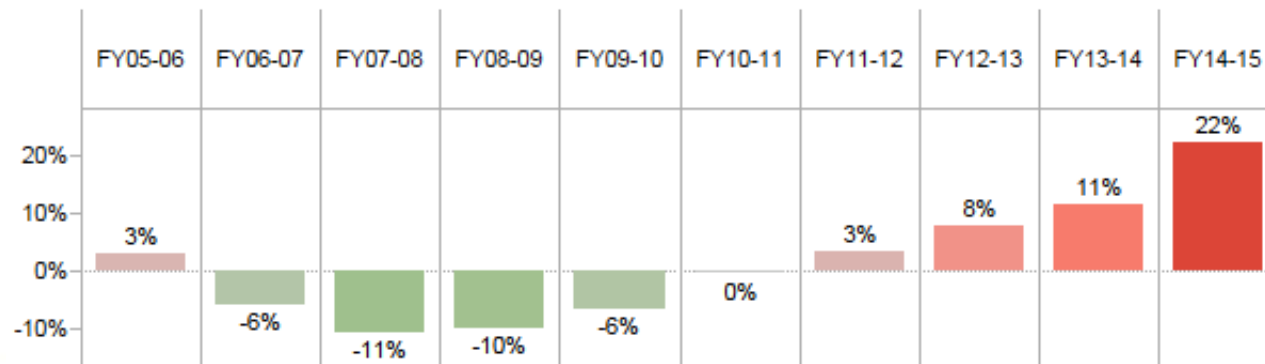
Basic Trends

In Minnesota, on September 30, 2015, there were close to **7,600** children in care under the age of 18- a 10% reduction since 2005

of children in care (< age 18)



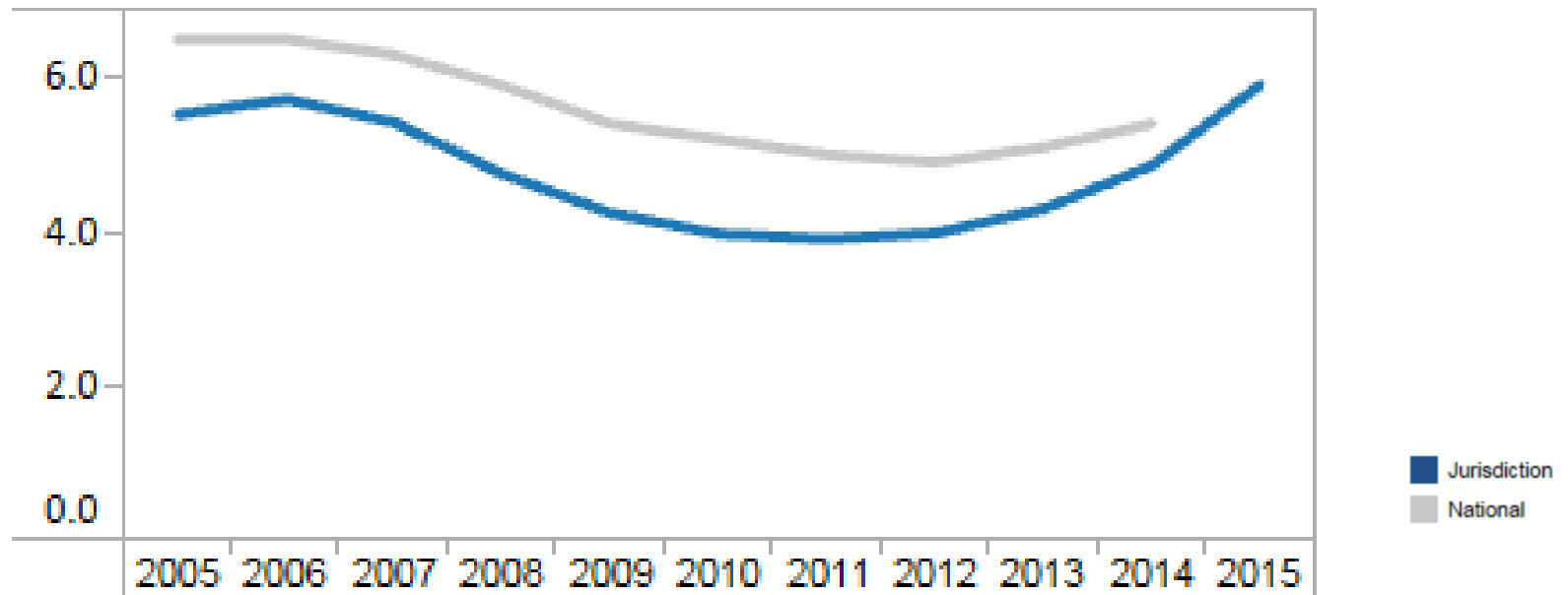
year over year change in the # in care



Basic Trends

Minnesota's rate of children in care steadily increased and is now higher than the national rate

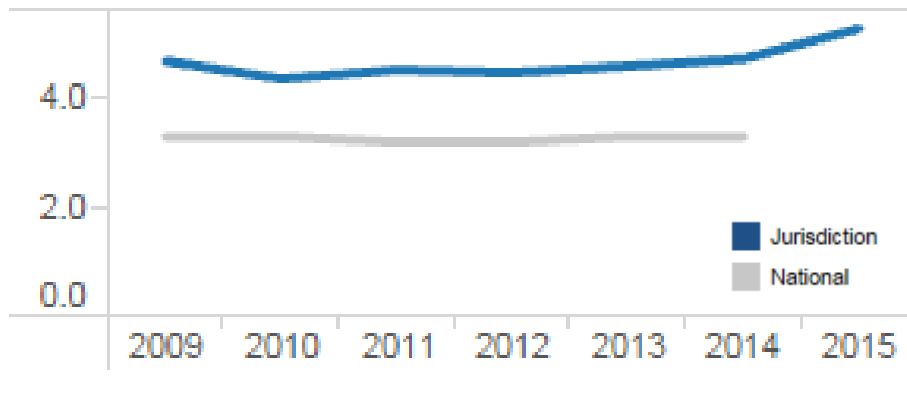
rate in care (per 1,000, < age 18)



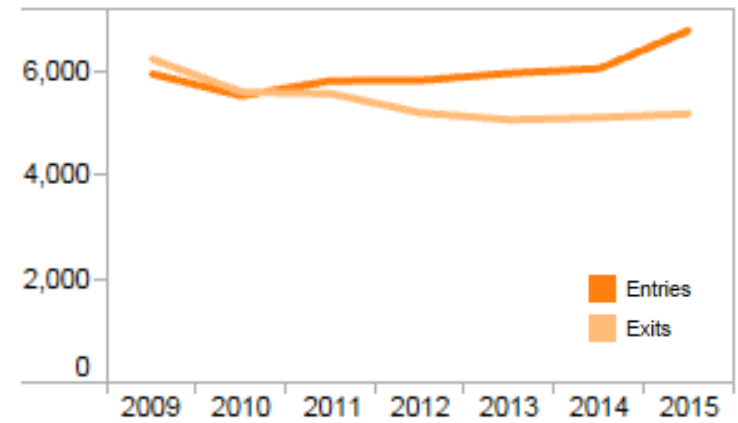
Basic Trends

Minnesota has a higher entry rate than nationally with increases in most recent years

rate of entry (per 1,000, under age 18)



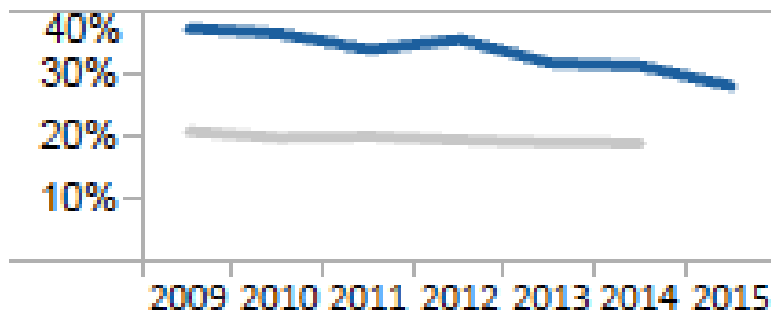
of children entering & exiting



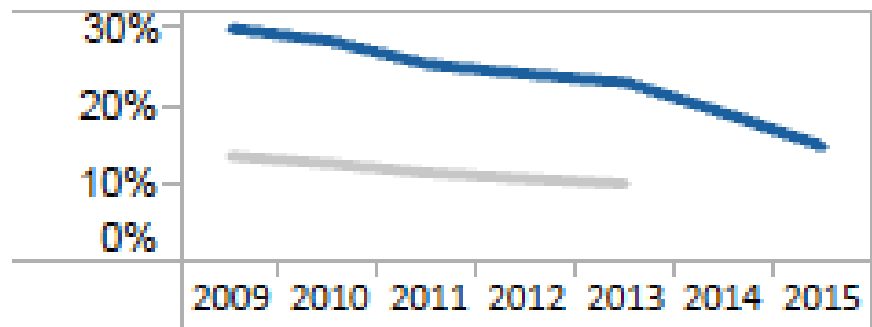
Front End Trends

Minnesota has a higher % of children who re-enter care and/or stay in care for short periods.

% entries that are re-entries



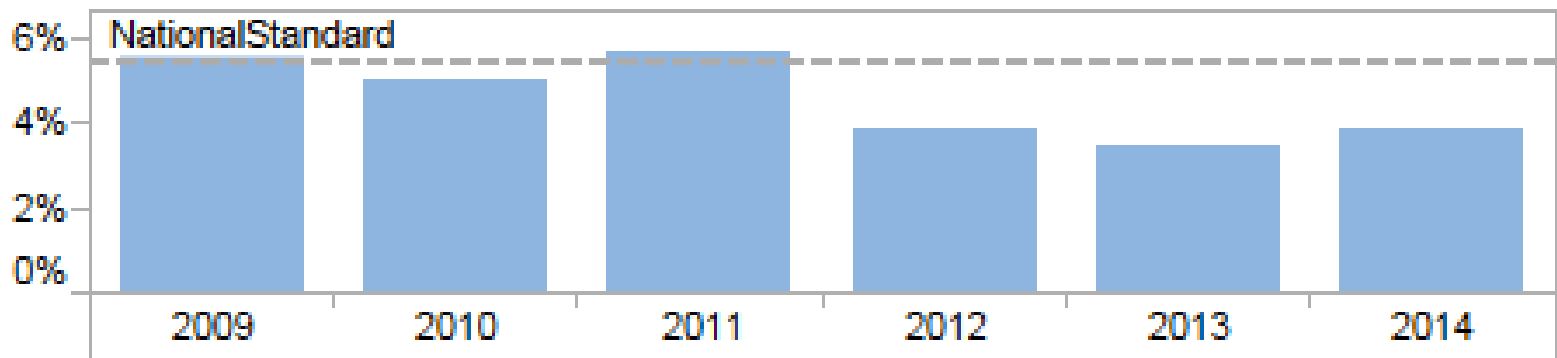
% entries that exit w/in 30 days



Front End Trends

Recurrence of maltreatment is a key indicator of safety which has shown improvement between 2009-2014.

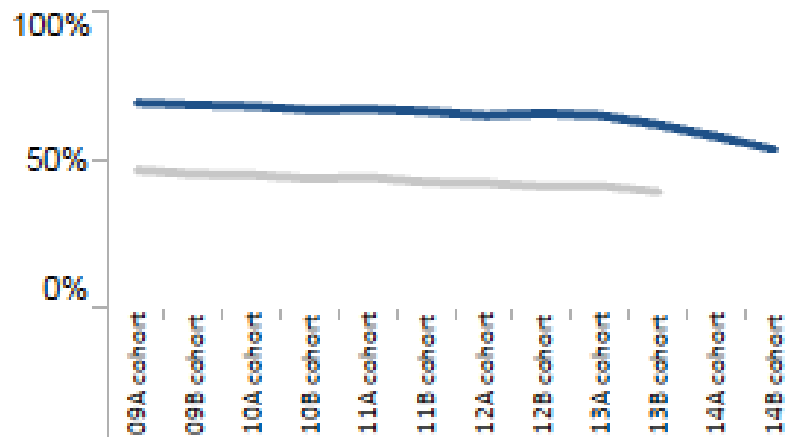
% children who experience repeat maltreatment (within 6 months)



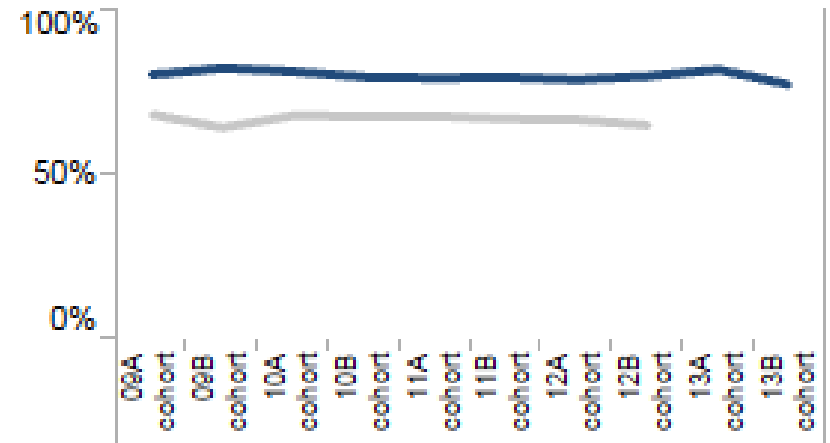
Timely Permanency

Minnesota has a higher percentage of children achieving permanency within 12 months of entry. This has declined recently.

Permanency within 12 months of entry



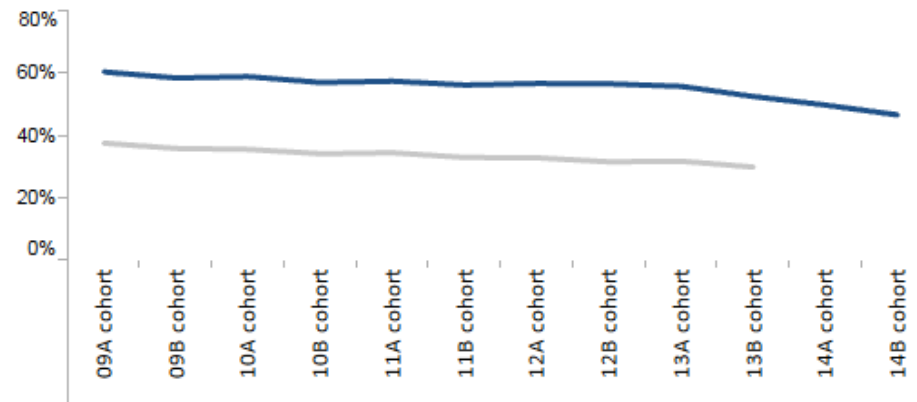
Permanency within 24 months of entry



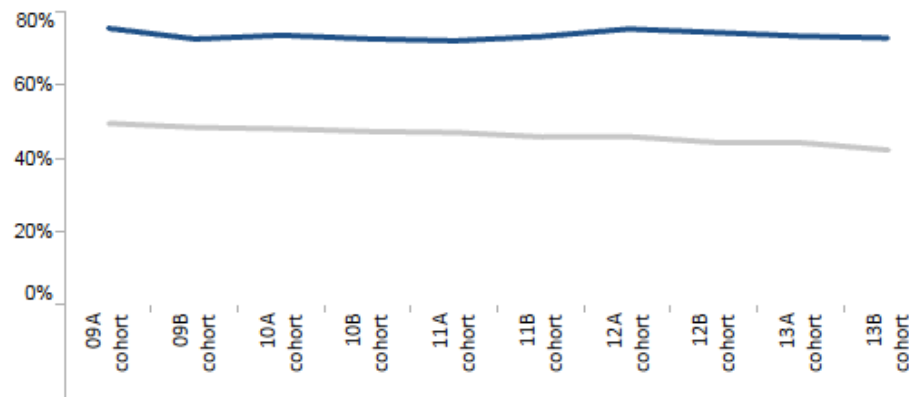
Timely Permanency

A higher percentage of MN children reunify with their parent/primary caretaker within 12 and 24 months of entry.

Reunified with parent, primary caretaker within 12 months of entry



Reunified with parent, primary caretaker within 24 months of entry



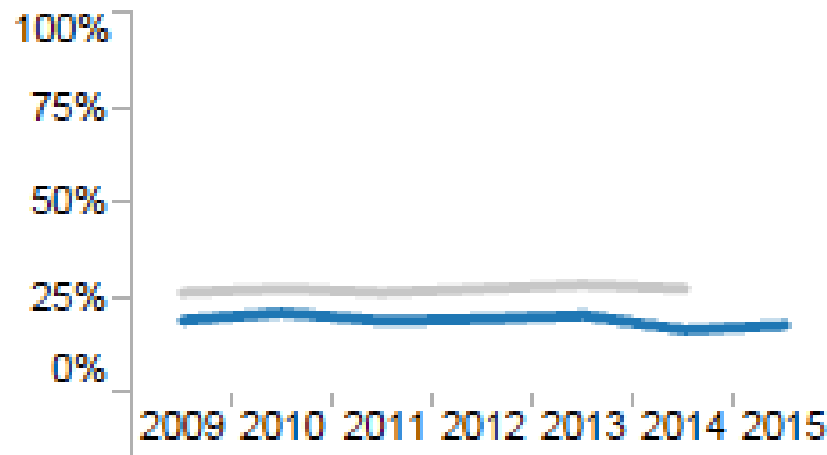
Children in Care 2+ Years

A lower percentage of Minnesota children in care for longer periods achieve timely permanency.

in care 2 + years


#	1,349
%	18%
Nat'l %	25%

% in care 2+ years who achieve permanency w/in 12 months



Children in Care 2+ Years

Most Minnesota children in care for longer periods have a case plan goal of reunification and are in non-relative care.

profile of current caseload in care 2+ years 

(for groups that represent at least 2% of the total)

	ages 0-12		ages 13-17		
	Reunif	Adopt	Reunif	Adopt	APPLA
Congregate care			13%		2%
Foster care	21%		14%	2%	
Kinship care	8%		4%		
Pre-adoptive home	12%	3%	3%		

SAFE STRONG SUPPORTIVE

Trends

URBAN & RURAL COUNTIES

Basic Trends

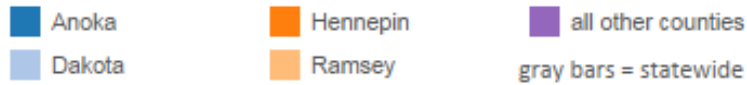
Minnesota county trends reflect larger state trends: earlier reductions and increases in most recent years.

Number of Children In Care and Year over Year Change in the # in Care 

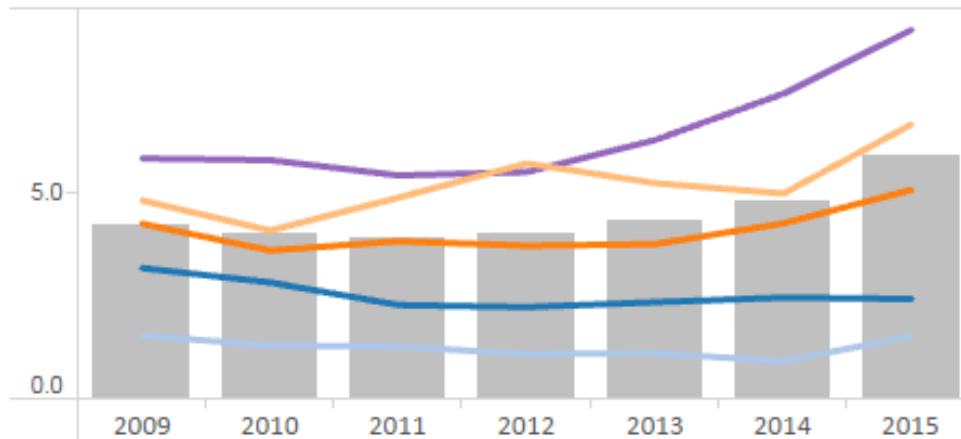
	FY05-06	FY06-07	FY07-08	FY08-09	FY09-10	FY10-11	FY11-12	FY12-13	FY13-14	FY14-15	FY09-15
Dakota				161	135	132	114	116	93	155	-3.7%
					-16.1%	-2.2%	-13.6%	1.8%	-19.8%	66.7%	
Anoka				272	239	193	191	199	206	202	-25.7%
					-12.1%	-19.2%	-1.0%	4.2%	3.5%	-1.9%	
Hennepin	1,868	1,718	1,486	1,144	974	1,023	980	1,016	1,149	1,392	21.7%
	6.2%	-8.0%	-13.5%	-23.0%	-14.9%	5.0%	-4.2%	3.7%	13.1%	21.1%	
Ramsey	896	806	684	580	498	581	673	638	607	833	43.6%
	4.6%	-10.0%	-15.1%	-15.2%	-14.1%	16.7%	15.8%	-5.2%	-4.9%	37.2%	
all other counties	4,345	4,175	3,823	3,229	3,192	3,094	3,223	3,614	4,170	5,011	55.2%
	1.2%	-3.9%	-8.4%	-15.5%	-1.1%	-3.1%	4.2%	12.1%	15.4%	20.2%	

Basic Trends

The rate of children in care increased for most counties, particularly in rural ones.



Rate of Children In Care
(per 1,000 children in population)

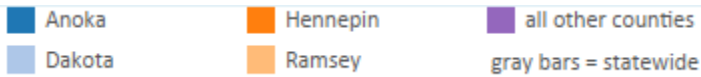


(ranked by value for most recent year, best performing county at top)

	2009	2010	2011	2012	2013	2014	2015
Dakota	1.5	1.3	1.3	1.1	1.1	0.9	1.5
Anoka	3.2	2.8	2.3	2.2	2.3	2.5	2.4
Hennepin	4.2	3.6	3.8	3.7	3.7	4.3	5.1
Ramsey	4.8	4.1	4.9	5.7	5.2	5.0	6.7
all other counties	5.8	5.8	5.4	5.5	6.3	7.4	8.9

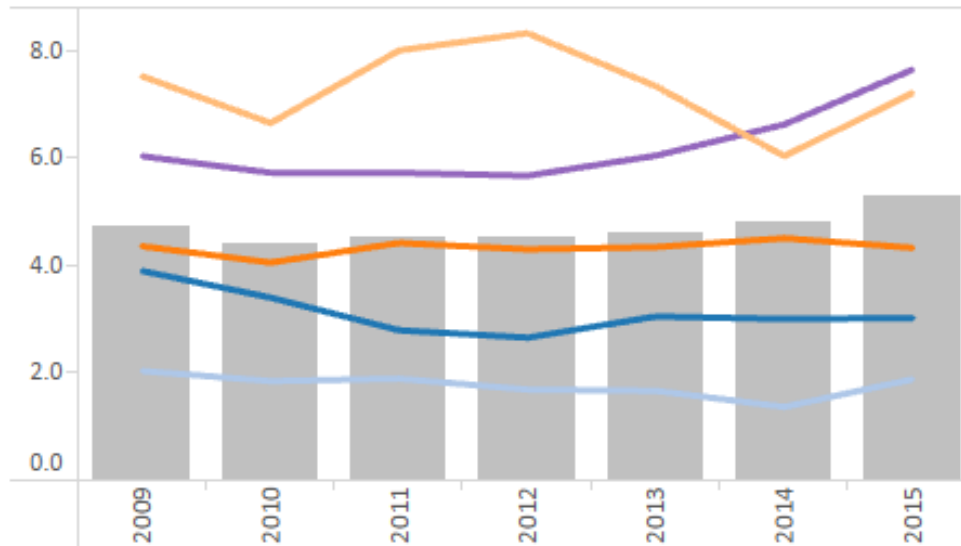
Front End Trends

Ramsey County and rural counties have higher entry rates.



Rate of Children Entering Care

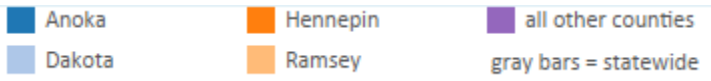
(per 1,000 children in population)



	2009	2010	2011	2012	2013	2014	2015
Dakota	2.0	1.8	1.9	1.7	1.7	1.4	1.9
Anoka	3.9	3.4	2.8	2.7	3.0	3.0	3.0
Hennepin	4.4	4.0	4.4	4.3	4.3	4.5	4.3
all other counties	6.0	5.7	5.7	5.7	6.0	6.6	7.6
Ramsey	7.5	6.6	8.0	8.3	7.3	6.0	7.2

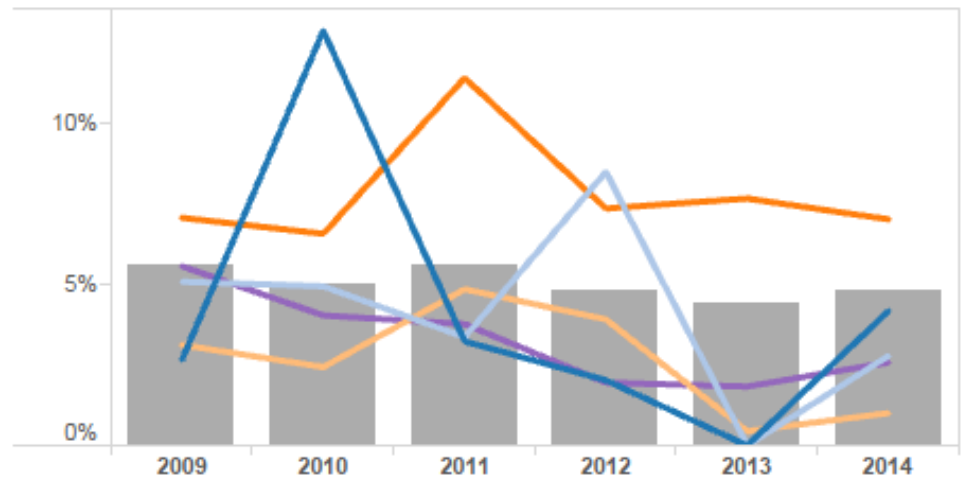
Front End Trends

Hennepin County has a consistently higher % of children who experience repeat maltreatment.



% of Children with Repeat Maltreatment in 6 Months

CFSR Round 2 Measure: Of all children who were victims of a substantiated or indicated report of maltreatment during a 6 month period, what percent were victims of another substantiated or indicated maltreatment report within 6 months of the initial report?

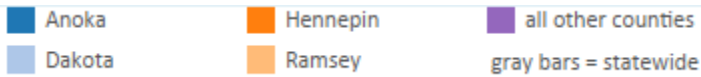


(ranked by value for most recent year, best performing county at top)

	2009	2010	2011	2012	2013	2014
Ramsey	3.1%	2.4%	4.8%	3.9%	0.4%	1.0%
all other counties	5.6%	4.0%	3.8%	1.9%	1.8%	2.6%
Dakota	5.1%	4.9%	3.4%	8.5%	0.0%	2.8%
Anoka	2.7%	12.8%	3.2%	2.0%	0.0%	4.2%
Hennepin	7.1%	6.6%	11.4%	7.3%	7.6%	7.0%

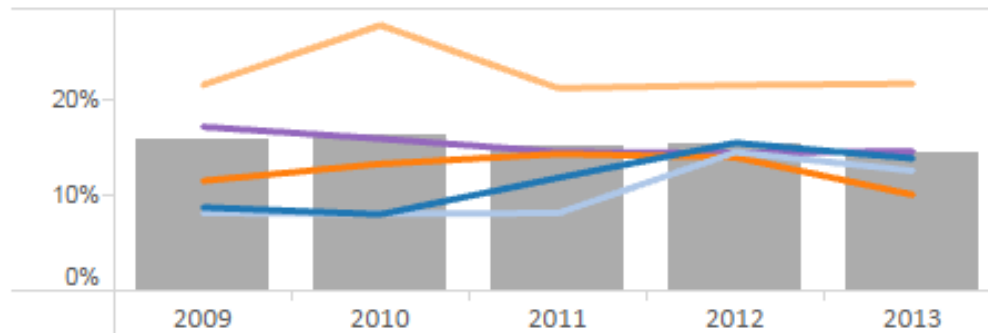
Front End Trends

Ramsey County has the highest % of children re-entering care within 12 months.



% Re-Entry to Foster Care in 12 Months

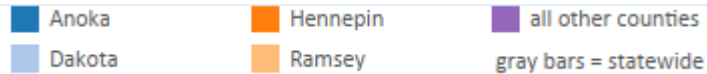
CFSR Round 3 Measure: Of all children who enter foster care in a 12 month period and are discharged within 12 months to reunification, relatives or guardianship, what percent re-entered foster care within 12 months of their



	2009	2010	2011	2012	2013
Hennepin	11.6%	13.4%	14.4%	14.1%	10.1%
Dakota	8.2%	8.1%	8.2%	14.6%	12.6%
all other counties	17.3%	16.0%	14.6%	14.5%	14.7%
Anoka	8.8%	8.0%	11.9%	15.6%	13.9%
Ramsey	21.7%	28.0%	21.3%	21.6%	21.8%

Timely Permanency

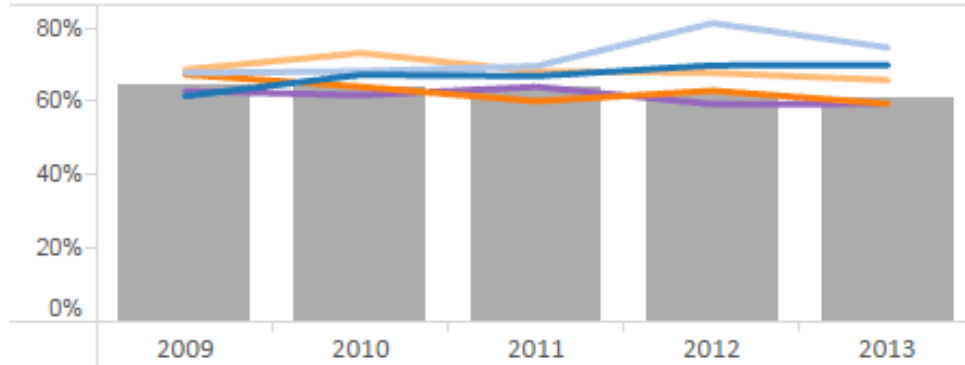
Urban Minnesota counties have slightly better permanency outcomes for children entering care and achieving permanency within 12 months.



% Permanency in 12 Months for Children Entering Care

CFSR Round 3 Measure: Of all children under age 18 who enter care during a 12-month period, what percent achieve permanency within 12 months or entry and before their 18th birthday?

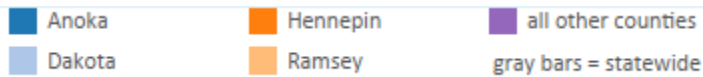
(ranked by value for most recent year, best performing county at top)



	2009	2010	2011	2012	2013
Dakota	67.7%	68.2%	69.6%	81.3%	74.6%
Anoka	61.4%	67.2%	66.9%	69.8%	69.8%
Ramsey	68.6%	73.1%	68.2%	67.7%	65.8%
Hennepin	67.3%	63.9%	60.0%	62.9%	59.3%
all other counties	62.8%	61.7%	64.0%	59.2%	59.3%

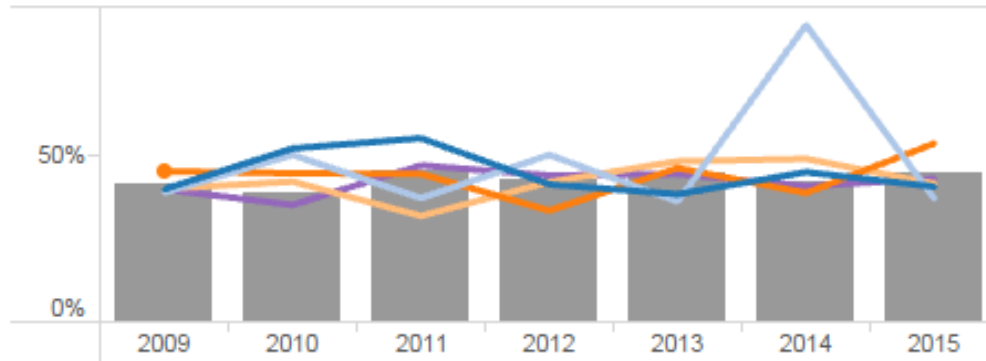
Timely Permanency

Hennepin County has a slight edge on timely permanency for children in care 12-23 months.



% Permanency in 12 Months for Children in Care 12-23 Months [↗](#)

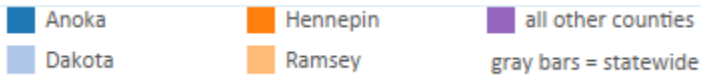
CFSR Round 3 Measure: Of all children under age 18 in foster care on the first day of the 12-month period, who had been in care for 12-23 months, what percent discharged to permanency within 12 months and before their 18th birthday?



	2009	2010	2011	2012	2013	2014	2015
Hennepin	45.1%	44.5%	44.3%	33.3%	46.1%	38.6%	53.4%
all other counties	39.7%	35.0%	46.9%	43.8%	44.3%	40.7%	42.9%
Ramsey	39.9%	42.0%	31.7%	41.9%	48.1%	48.8%	41.4%
Anoka	39.7%	51.9%	55.0%	41.2%	38.2%	44.8%	40.5%
Dakota	38.7%	50.0%	37.0%	50.0%	36.0%	88.9%	36.8%

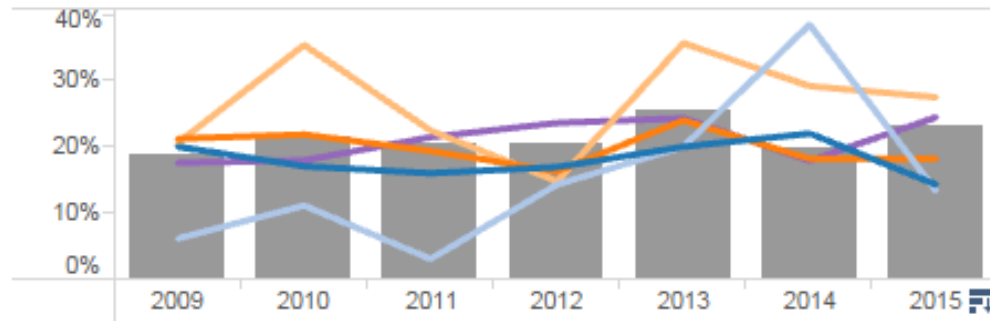
Timely Permanency

Ramsey County and rural counties have a higher percentage of children in care for long periods who achieve timely permanency.



% Permanency in 12 Months for Children in Care 24+ Months

CFSR Round 3 Measure: Of all children under age 18 in foster care on the first day of the 12-month period, who had been in foster care for 24 months or longer, what percent discharged to permanency within 12 months and before their 18th birthday?



	2009	2010	2011	2012	2013	2014	2015
Ramsey	20.6%	35.4%	22.4%	14.8%	35.7%	29.2%	27.5%
all other counties	17.6%	17.9%	21.5%	23.6%	24.3%	17.9%	24.5%
Hennepin	21.2%	21.8%	19.4%	16.3%	24.0%	18.2%	18.2%
Anoka	20.0%	17.1%	16.0%	16.9%	20.0%	22.0%	14.3%
Dakota	6.1%	11.1%	3.0%	14.3%	20.0%	38.5%	13.3%

SAFE STRONG SUPPORTIVE

Questions?

SJPEGUERO@CASEY.ORG

206-216-4179