

# Quick Reference Guide: What is Recyclable?

## ACCEPTABLE



### PLASTIC BOTTLES AND CONTAINERS

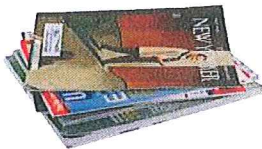
Plastic bottles, containers, lids/tubs, natural/color plastic containers



### CARDBOARD



### NEWSPAPER & INSERTS



### MAGAZINES & CATALOGS



### PHONE BOOKS



### OFFICE PAPER



### FOOD & BEVERAGE CARTONS

Chipboard/paperboard



### JUNK MAIL



### BROWN PAPER BAGS



### GLASS FOOD & BEVERAGE CONTAINERS

Glass acceptance varies by market area.



### ALUMINUM CANS



### METAL FOOD & BEVERAGE CONTAINERS

# What is NOT recyclable

**NON-ACCEPTABLE = CONTAMINATION**



**BAGGED RECYCLABLES**



**LOOSE PLASTIC BAGS**



**FOOD WASTE AND LIQUIDS**



**FOAM PRODUCTS**

Take-out containers, foam cups, packing materials



**TANGLERS**

Garden hoses, holiday lights, wires, hangers



**MEDICAL WASTE**



**YARD WASTE**

Branches, limbs and bagged yard waste



**TEXTILES**

Clothing, towels, sheets, curtains



**ELECTRONIC WASTE**

(TV, batteries, bulbs)

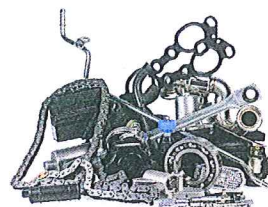


**WOOD**

Pallets, tree limbs, furniture



**PROPANE TANKS & TIRES**



**SCRAP METALS**

Heavy metal, auto parts, household metals (pots and pans)

**PIZZA BOXES ARE ALSO NOT ACCEPTABLE**